

Caterpillar 385 CL

Long Reach Excavator
for
Subsea Trenching



JD-Contractor A/S

SUBSEA CABLES & PIPELINES

JD-Contractor A/S is the largest underwater contractor in Denmark with almost 40 years experience in carrying out contractor- and diving assignments worldwide



Nybovej 8-9 · 7500 Holstebro · Denmark
Tel. (+45) 97 42 63 11 · Fax (+45) 97 41 19 22
post@JDCon.com
www.JDCon.com



Long Reach Excavator for Subsea Trenching

Equipment Specifications

Owner: JD-Crafts A/S (+45 97 42 63 11)

Year: 2005

Manufacturer: CATERPILLAR

Model: 385CL Long Reach

Serial Number: T2E00312



Caterpillar 385 CL Long Reach Triple boom

Detailed Description

- Erops cabin with heating system
- Sun blinds and heating system in cabin
- Air-suspended driver seat
- Long Reach Triple boom 12 m and stick 8.5 m with extra hydraulic function
- Heavy duty lifting cylinder rams for extra lifting power
- Automatic central greasing system
- Cat walks left and right
- Safety valves
- GP bucket
- Heavy Duty undercarriage with 750 mm track shoes
- Extra counterweight
- Factory CE certified

Navigation

- System: Trimble GCS900 Dual GPS GNSS (GPS & Glonass) for excavator with sub kit.
- GPS antenne: Trimble MS992 with GPS & Glonass
- Display/controller: Trimble CB430 – Version 11.21
- Communication: UHF radio 430 – 470 MHz for RTK data from base (Trimtalk, Satel) 3G modem with GPSnet.dk for RTK data (VRS)

Normal precisions of the excavator on land, measured from the shovel tip:

- Horizontal precision: ± 15 mm at 16 m arm (RTK fix)
± 25 mm at 20 m arm (RTK fix)
- Vertical precision: ± 30-50 mm (RTK fix)

Working range

- Boom length: 12.5 m
- Stick length: 8.5 m
- Separate jib: 5.5 m with 330 linkage
- Separate new GP bucket with teeth to fit to 330 linkage.
- Max. digging depth: ± 16 m (including jib ± 21,5)
- Max. reach on ground level: ± 21 m
- Cutting height: ± 21 m
- Lifting capacity full reach: ± 10.000 kg
- Bucket capacity: ± 3.0 m3
- Grab capacity: ± 2.5 m3

Shipping dimensions

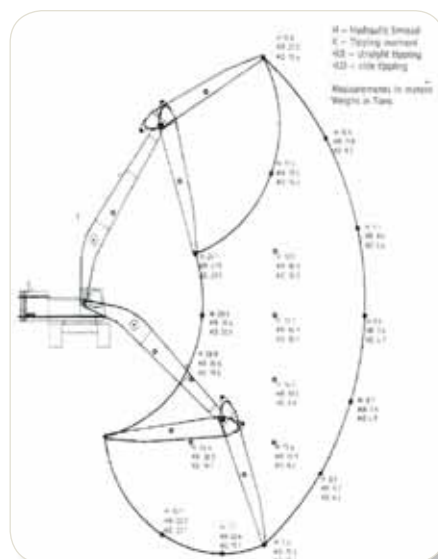
- Shipping height: 4.33 m
- Shipping length: 18.8 m
- Min. - Max. width: 3.84-4.4 m
- Ground clearance: 0.89 m
- Ground pressure: 0.85 kg/em

Technical data

- Engine power: 382 kw/520 hp
- Max. flow hydraulic system: 2 x 490 l/ min
- Travel speed: 2.7 - 4.5 km/ h
- Hydraulic system capacity: 995 litres
- Fuel tank capacity: 1,240 litres
- Fuel consumption: 50-90 l/h

Additional features

- Air-conditioning
- Safety valves boom & stick cylinders
- Profiling system
- Connectable to survey system
- Rotation function
- Extra hydraulic function





Nybovej 8-9 · 7500 Holstebro · Denmark
Tel. (+45) 97 42 63 11 · Fax (+45) 97 41 19 22
post@JDCon.com
www.JDCon.com